


Case Report

Gastric Pyloric Schwannoma: A Case Report and Review of the Literature

Rebaz M. Ali^{1*} , Shkar O. Arif², Rezhen J. Rashid³, Rawa M. Ali⁴, Abubakar Ibrahim⁵, Dana T. Gharib⁶, Marwan A. Ghafoor⁷, Afolabi Hafeez Abiola⁸, Bamiro Akeem Moradehun⁹, Shano M. Ali¹⁰, Dear A. Ismaeil¹¹, Hoshman R. Asaad⁶

1. Department of Oncology, Hiwa Cancer Hospital, Sulaymaniyah, Iraq
2. Department of Radiotherapy, Zhianawa Cancer Center, Sulaymaniyah, Iraq
3. Department of Radiology, Hiwa Cancer Hospital, Sulaymaniyah, Iraq
4. Hospital for Treatment of Victims of Chemical Weapons, Halabja, Iraq
5. Department of Obstetrics and Gynaecology, School of Medical Sciences, Universiti Sains Malaysia, Kubang Kerian, Kelantan, Malaysia
6. Gastroenterology and Hepatology Teaching Hospital, Sulaymaniyah, Iraq
7. School of Health Sciences, Health Campus, Universiti Sains Malaysia Kubang Kerian, Kelantan, Malaysia
8. Department of Surgery, School of Medical Sciences, Universiti Sains Malaysia Health Campus, Kubang Kerian Kelantan, Malaysia
9. Anatomy Department, School of Medical Sciences, Universiti Sains Malaysia Health Campus, Kubang Kerian, Kelantan, Malaysia
10. Scientific Affairs Department, Smart Health Tower, Madam Mitterrand Street, Sulaymaniyah, Iraq
11. College of Medicine, University of Sulaimani, Madam Mitterrand Street, Sulaymaniyah, Iraq

* Corresponding author: rebazonco.hiwa@gmail.com (R.M. Ali) Slemani Heights, Apartment 50, Zip code: 46001, Sulaymaniyah, Iraq

**Keywords:**

Schwannoma
Stomach
Pyloric region
Benign tumor
S100 positivity
Surgical resection

Received: February 10, 2025

Revised: February 25, 2025

Accepted: March 10, 2025

First Published: March 20, 2025

Copyright: © 2025 Ali et al. This is an open access article distributed under the terms of the Creative Commons Attribution License (<https://creativecommons.org/licenses/by/4.0/>), which permits unrestricted use, distribution, and reproduction in any medium, provided the original author and source are credited.

Abstract**Introduction**

Schwannomas are slow-growing, subclinical neoplasms rarely found in the gastrointestinal tract. This study reports a case of schwannoma in the pyloric region of the stomach.

Case presentation

A 50-year-old female presented with a one-week history of epigastric pain, dark tarry stools, and nausea. Diagnostic imaging, including ultrasound, computed tomography, and magnetic resonance imaging, revealed a well-defined mass in the pyloric region of the stomach. A biopsy from endoscopic examination revealed a gastric schwannoma. The patient underwent surgical resection of the tumor. Histopathological examination showed benign spindle cells with strong S100 positivity in immunohistochemistry, confirming schwannoma. Post-operative follow-up included treatment for *H. pylori* infection and monitoring for recurrence or complications. No recurrence was reported after six months.

Literature Review

Gastric schwannomas are challenging to diagnose preoperatively due to nonspecific symptoms, overlapping radiological and endoscopic features, and incidental discovery

Citation: Ali RM, Arif SO, Rashid RJ, Ali RM, Ibrahim A, Gharib DT et al. Gastric Pyloric Schwannoma: A Case Report and Review of the Literature. Barw Medical Journal. 2025;3(2):70-74.

<https://doi.org/10.58742/bmj.v3i2.168>

during imaging for unrelated conditions. Recent reports emphasize the importance of detailed imaging for lesion characterization. Surgical resection remains optimal, offering definitive diagnosis and excellent prognosis with notably low recurrence rates.

Conclusion

Schwannoma is rare in the stomach, especially in the pyloric region. Definitive diagnosis may require immunohistochemical analysis. Appropriate follow-up after treatment can be essential to identify emerging complications and ensure timely intervention.

1. Introduction

Schwannomas, also referred to as neurilemmomas or neurinomas, are uncommon and non-cancerous spindle cell tumors that originate from excessive proliferation of myelin-producing Schwann cells in the nerve sheath and remain localized in their primary location [1,2]. They are frequently slow-growing and rarely found in the gastrointestinal tract (GIT). Gastric schwannoma (GS) represents only 2–6% of mesenchymal tumors within the GIT and 0.2% of all gastric tumors [3,4]. Although most schwannomas occur alone, GS is often part of neurofibromatosis type 2 and has an association with other tumors. There is a gender predilection towards females [3]. Preoperatively, GS is often challenging to accurately distinguish from gastric submucosal or other stromal tumors due to physicians' limited recognition of GS [5,6]. Herein, a case of schwannoma originating from the pyloric region of the stomach is reported. The references' eligibility has been verified, and the report has been structured in accordance with CaReL guidelines [7,8].

2.2. Clinical findings

Only epigastric tenderness was noted on physical examination, with no other systemic abnormalities.

2.3. Diagnostic assessment

An abdominal ultrasound (U/S) showed a well-defined hypoechoic mass (30 mm) in the pyloric region of the stomach. A contrast-enhanced computed tomography (CT) scan of the abdomen revealed a well-defined, smooth outline lesion measuring 35x30 mm in the pyloric region with mild mucosal wall thickening (7 mm) and relative proximal dilation of the stomach, without lymphadenopathy. A dynamic magnetic resonance imaging (MRI) of the abdomen revealed a well-defined, 33 x 27 x 27 mm, space-occupying lesion in the epigastric region between the lesser curvature of the stomach and the left hepatic lobe. The mass exhibited T1 hypointensity, T2 hyperintensity, restricted diffusion on diffusion-weighted imaging, and diffuse early enhancement with retained contrast in the delayed phase. The mass was attached to the stomach wall (Figure 1). An esophagogastroduodenoscopy (EGD) revealed a

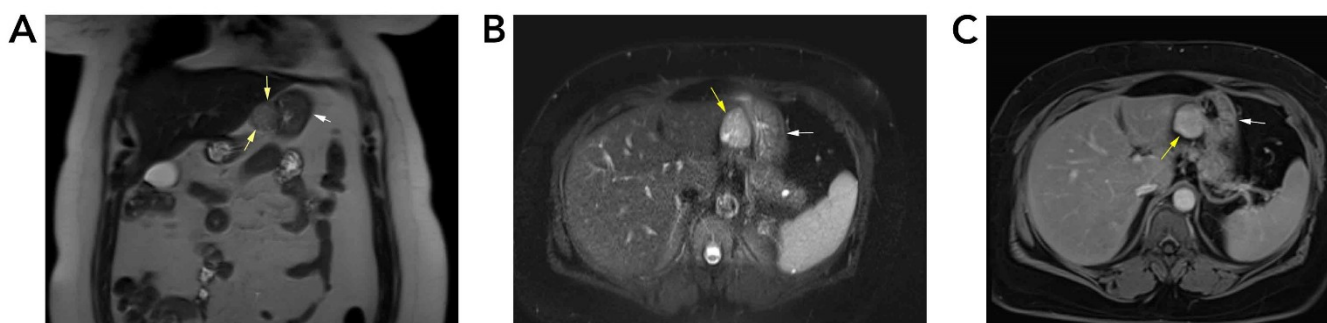


Figure 1. A well-defined, exophytic mass along the lesser curvature of the stomach at the level of the body. (A) Coronal T2W1 of the upper abdomen showed a homogenous, slightly hyperintense mass (yellow arrow) in contact with the stomach (white arrow), while (B) axial T2 fast suppression image showed a hyperintense mass (yellow arrow) between the right lobe of the liver and stomach (white arrow), and (C) axial T1 fat suppression showed a homogenous, avid post-contrast-enhancing mass (yellow arrow), with the degree of enhancement being more than that of the gastric wall (white arrow). The mass showed areas of restriction on diffusion sequence (not shown).

2. Case Presentation

2.1. Patient information

A 50-year-old female presented with epigastric pain for one week. The pain was associated with melena and nausea, with no constipation, diarrhea, or fever. Her past medical history was negative for any chronic disease. She had a thyroid lobectomy two years ago and was on thyroxin 100 mcg/day.

large subepithelial lesion, approximately 4 cm, located in the incisura and extending to the lower body on the lesser curvature side, with an antral nipple sign. The overlying mucosa was normal, but there was nodular antral gastropathy.

2.4. Therapeutic intervention

A resection of the anterior gastric wall near the incisura angularis was performed to remove the mass. Histopathological

examination of the lesion revealed hypo- and hypercellular areas of spindled cells arranged in loose fascicles and having neural-type, lightly eosinophilic and clear cytoplasm and spindled and buckled nuclei with fine chromatin. Scattered hyalinized blood vessels were present within the lesion. These findings indicated a benign spindle cell lesion suggestive of schwannoma. The tumor had a mitotic rate of less than five mitoses per 50 high-power fields. There was necrosis or vascular invasion, and the resection margins were free. Four lymph nodes were examined and found to be negative for metastasis (Figure 2). Immunohistochemistry of the tumor revealed positivity for S100, characterized by strong and diffuse cytoplasmic and nuclear staining. Weak and focal cytoplasmic staining was observed for desmin and smooth muscle actin, while the tumor was negative for CD117 and CD34.

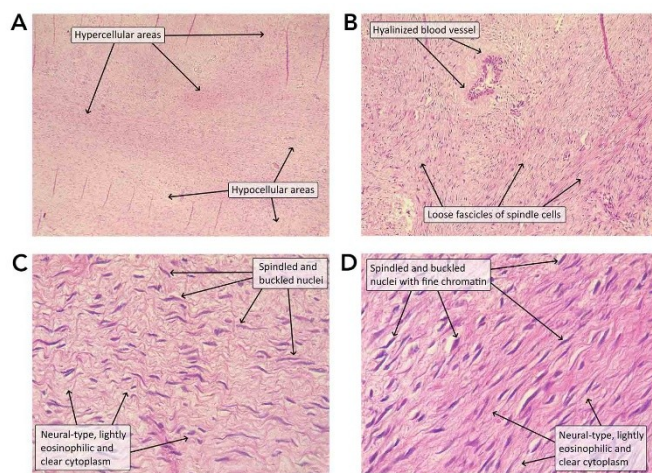


Figure 2. A) The tumor is composed of alternating hypercellular and hypocellular areas. B) The cells have a spindle shape and are arranged in loose fascicles. There is a hyalinized blood vessel. C-D) The cells have indistinct cytoplasmic membranes with lightly eosinophilic to clear cytoplasm. The nuclei are spindled, wavy, and buckled, with fine chromatin. [Hematoxylin and eosin; original magnification x 40 (A), x 100 (B), x 400 (C and D)].

2.5. Follow-up and Outcome

Six months postoperatively, the patient developed lower back pain. Lumbosacral MRI showed L3-4 and L4-5 mild disc thecal sac indentation, causing mild bilateral foraminal narrowing and a focal bone lesion at the acetabular roof. Pelvic MRI indicated early osteoarthritis changes in the right hip joint with subchondral pseudocystic changes at the acetabular roof. It also showed a thin-walled unilocular cystic lesion in the left ovary measuring 40x20 mm. The patient received analgesics for disc problems and osteoarthritis. A follow-up EGD one year later revealed a long transverse scar in the incisura area and mucosal congestion. Multiple biopsies from the area showed chronic active *H. pylori* pangastritis without metaplastic and dysplastic changes. The patient was referred to a gastroenterologist and started a regimen for *H. pylori* eradication. Subsequently, a CT scan revealed a thickening of the gastric outlet and pyloric wall. The rest of the stomach was distended and fluid-filled, raising suspicion of a gastric ulcer. An endoscopic biopsy from the gastric mucosa revealed mild chronic gastritis with mild

glandular atrophy, ulceration, and fibromuscular hyperplasia, with no evidence of *H. pylori* microorganisms, intestinal metaplasia, or dysplasia. A biopsy was also taken from a small mid-esophageal ulcer, which showed no pathologic findings.

3. Discussion

Gastric schwannomas are rare mesenchymal benign tumors, comprising 0.2% of all gastric tumors [4]. Malignant transformation of GS is extremely rare [9]. The development of GS can occur at any age, but it is most commonly found in individuals in their fifties and sixties, with a higher incidence in women. Although many GSs are discovered incidentally, they may cause nonspecific symptoms such as pain or GIT bleeding [6]. In reviewing eight cases of GS, four cases presented with abdominal pain or discomfort, two had a palpable abdominal mass, one had hematochezia, and another one had weight loss and early satiety (Table 1). The present case was a 50-year-old female who complained about abdominal pain in the epigastric region for a week.

Diagnosing GSs presents several challenges due to their rare occurrence and nonspecific symptoms. Due to overlapping clinical, radiological, and endoscopic features, these tumors are often misidentified as other submucosal tumors, such as gastrointestinal stromal tumors, leiomyomas, or other mesenchymal tumors, which might bring delay in availing the right therapy. Endoscopic ultrasound is a valuable tool for differentiation but is not definitive. Schwannomas are typically diagnosed postoperatively through histopathological and immunohistochemical analysis, with S100 and SOX-10 providing positive confirmation and negative markers such as CD117 and smooth muscle actin, which help exclude other differential diagnoses [5,10]. Among the reviewed cases, CT was one of the most common methods used for the early characterization of the lesion. It was used in 87.5% of the cases, providing detailed imaging that helped identify the tumor's size, location, and relation to surrounding structures. Ultrasonography was used in 62.5% of cases, with 60% being endoscopic U/S, which aided in characterizing the lesion and determining its layer of origin, as this is essential for planning the therapeutic approach. Other methods, like EGD and upper gastrointestinal endoscopy, were less commonly used but played supportive roles in the diagnostic process [4,11]. In the current case, an abdominal U/S initially identified a well-defined hypoechoic mass in the pyloric region of the stomach. This was followed by a contrast-enhanced CT scan of the abdomen, which confirmed a smooth contoured lesion and mild mucosal wall thickening. Dynamic MRI showed a 33 x 27 x 27 mm lesion in the epigastric region between the lesser curvature of the stomach and the left hepatic lobe. An EGD revealed a large subepithelial lesion with an antral nipple sign.

Primarily, GS occurs in the fundus and body of the stomach, as documented in multiple case reports [1,3-5,11,12]. In three cases, including those by Majdoubi et al., Lin et al., and Manjesh et al., the tumor was located in the fundus [3,4,11], while in three other cases, the tumor was located in the gastric body [1,5,12].

Table 1. Review of eight reported cases of gastric schwannoma.

Author, year [Reference]	No. of cases	Age (year)	Sex	Clinical Presentation	History		Diagnostic Assessment				Treatment	Follow up-time	Recurrence
					Medical	Surgical	Mass Location/ Detection method	Disease appearance	Mass size (mm)	Immunohistochemical findings			
Sorial et al., 2024 ^[1]	1	82	M	Abdominal pain	N/A	N/A	GC of the stomach / CT	No lesions or ulcers	32	S100 (+), CD34, CD117, DOG-1, DS, & SMA (-) Ki67 (2-3%)	SWGR during laparoscopy	N/A	N/A
Majdoubi et al., 2024 ^[3]	1	50	M	Persistent postprandial pain, melena, anorexia, asthenia	None	None	Fundic region along the GC/ CT, GI endoscopy	Peptic ulcer and lesion	33	Fusiform cells. CD 117 (-) S100 (+) DOG (-) DS (-) AML (-)	Laparoscopic gastric atypical resection	8 months	No
Manjesh et al., 2024 ^[4]	1	62	F	Early satiety, weight loss	N/A	N/A	Fundus / USG, upper GI endoscopy, CECT	Hypocholic mass	83	Spindle cells. S100, GFAP, & P16 (+). CD117, DOG-1, SMA, & CD34 (-)	Exploratory laparotomy & Excision	N/A	N/A
Huang et al., 2024 ^[5]	1	72	F	Abdominal distension	N/A	N/A	Anterior lower stomach near GC / EUS, CT, EG	White ulcer scar	55	S-100, SDHB, & SOX-10 (+) CD34, CD117, DOG-1, & DS (-). Ki67 (1%)	EFTR	1 week	No
Kostovski et al., 2024 ^[6]	1	68	M	Lower abdominal discomfort	None	None	Antral region along the GC / CECT	Submucosal gastric lesion	62	Spindle cells. S100, SDHB, & SOX10, (+). CD34, CD 117, DOG-1, & DS (-). Ki-67 (<1%)	Supraumbilical median laparotomy & Excision	1 month	No
Korman et al., 2024 ^[10]	1	67	M	Progressive fatigue, paleness, hematochezia	None	N/A	Gastric antrum / Upper EUS	Submucosal lesion	9	S100 (+)	Hybrid ESD-EFTR	1 st 6 years	No
												2 nd 3 months after intervention	
Lin et al., 2024 ^[11]	1	66	F	Protruding subepithelial mass	N/A	N/A	Gastric fundus / EGD, EUS, CT	Subepithelial lesion	25	Short spindle-shaped cells. S100 (+)	Laparoscopic surgery	N/A	N/A
Huang et al., 2024 ^[12]	1	31	F	Palpable abdominal mass	N/A	N/A	Posterior wall of the GLC/ USG, CT	Mucosal ulcer	64	N/A	Laparoscopic gastric lesion resection	2 weeks	No

M: male F: female IDA: iron-deficiency anemia N/A: non-available GC: greater curvature CT: computed tomography GLC: gastric lesser curvature USG: ultrasonography EUS: endoscopic ultrasound EGD: esophagogastroduodenoscopy GI: gastrointestinal CECT: contrast-enhanced computed tomography EG: electrocoagulation mm: millimeter (+): positive (-): negative GFAP: glial fibrillary acidic protein DS: desmin SMA: smooth muscle actin ESD: endoscopic submucosal dissection EFTR: Endoscopic full-thickness resection SWGR: stapled wedge gastric resection

The antrum can also be the site of tumor origin, as described in two cases by Kormann et al. and Kostovski et al. [6,10]. No cases were reported in the cardia or pylorus. However, in the present case, the tumor originated from the pyloric region.

In the current case, a surgical resection of the anterior gastric wall near the incisura angularis was performed, and a 4.2-cm tumor was successfully removed. Histopathological examination showed a neural-type, low-grade, spindle cell tumor with a low mitotic rate, no necrosis or vascular invasion, and with negative margins. Immunohistochemical analysis revealed strong S100 positivity, insignificant staining for desmin and SMA, and negativity for CD117 and CD34, confirming the diagnosis of schwannoma. This approach aligns with other studies that reported successful surgical resection outcomes and similar histological and immunohistochemical profiles [1,4-6].

Post-surgical monitoring was crucial in the current case. The need to address new health concerns, such as *H. pylori* eradication, aligns with the follow-up practices noted by Kormann et al., who emphasized the importance of routine imaging and endoscopy to monitor for recurrence and manage complications [10]. However, unlike the present case, Lin et al. reported no significant post-surgical complications or new health issues during follow-up, suggesting a variation in the clinical outcomes [11]. Although detailed imaging and histopathological analyses were conducted in the current case, genetic profiling of the tumor was not performed. This could have provided valuable information about the tumor's potential for malignant behavior and recurrence.

4. Conclusion

Schwannoma is rare in the stomach, especially in the pyloric region. Definitive diagnosis may require immunohistochemical analysis. Appropriate follow-up after treatment can be essential to identify emerging complications and ensure timely intervention.

Declarations

Conflicts of interest: The author(s) have no conflicts of interest to disclose.

Ethical approval: Not applicable.

Patient consent (participation and publication): Written informed consent was obtained from the patient for publication.

Funding: The present study received no financial support.

Acknowledgements: None to be declared.

Authors' contributions: RMA and SOA were significant contributors to the conception of the study and the literature search for related studies. AI, DTG, AHA, BAM and SMA were involved in the literature review, the study's design, and the critical revision of the manuscript, and they participated in data collection. MAG, DAI and HRA were involved in the literature

review, study design, and manuscript writing. RJR was the radiologist who performed the assessment of the case. RMA was the pathologist who performed the diagnostic of the case. RMA and MAG confirm the authenticity of all the raw data. All authors approved the final version of the manuscript.

Use of AI: AI was not used in the drafting of the manuscript, the production of graphical elements, or the collection and analysis of data.

Data availability statement: Not applicable.

References

1. Sorial V, Khan AS, Welsh T, Zhang L, Fayek SA. Gastric Schwannoma in an Octogenarian: A Case Report and Review of the Literature. *Cureus*. 2024;16(4). [doi:10.7759/cureus.58857](https://doi.org/10.7759/cureus.58857).
2. Abdullah AS, Ahmed AG, Mohammed SN, Qadir AA, Bapir NM, Fatah GM et al. Benign Tumor Publication in One Year (2022): A Cross-Sectional Study. *Barw Medical Journal*. 2023;1(4):20-25. [doi:10.58742/bmj.v1i4.20](https://doi.org/10.58742/bmj.v1i4.20).
3. Majdoubi A, El Achchi A, El Hammouti M, Bouhout T, Serji B. Gastric schwannoma: The gastrointestinal tumor simulator-case report and literature review. *International Journal of Surgery Case Reports*. 2024; 116:109389. [doi:10.1016/j.ijscr.2024.109389](https://doi.org/10.1016/j.ijscr.2024.109389).
4. Manjesh KA, Nelluri N, Narra AR, Kota SR, Abuji K, Narra AR, et al. Common Benign Nerve Sheath Tumor at an Uncommon Location-Gastric Schwannoma. *Cureus*. 2024; 16(6). [doi:10.7759/cureus.62569](https://doi.org/10.7759/cureus.62569).
5. Huang S, Huang S, Fang T. Endoscopic full-thickness resection of a large gastric schwannoma and iatrogenic cervical esophageal perforations: A case report. *Medicine*. 2024;103(28):e38808. [doi:10.1097/MD.00000000000038808](https://doi.org/10.1097/MD.00000000000038808).
6. Kostovski O, Trajkovski G, Ristovski G, Kunovska SK, Kostovska I. Gastric schwannoma: a case report. *Journal of Surgical Case Reports*. 2024;2024(3): [doi:10.1093/jscr/rjae181](https://doi.org/10.1093/jscr/rjae181).
7. Kakamad FH, Abdalla BA, Abdullah HO, Omar SS, Mohammed SH, Ahmed SM, et al. Lists of predatory journals and publishers: a review for future refinement. *European Science Editing*. 2024;50:e118119. [doi:10.3897/ese.2024.e118119](https://doi.org/10.3897/ese.2024.e118119).
8. Prasad S, Nassar M, Azzam AY, Jose FG, Jamee M, Sliman RKA, et al. CaReL Guidelines: A Consensus-Based Guidelines on Case Reports and Literature Review (CaReL). *Barw Medical Journal*. 2024;2(2):13-19. [doi:10.58742/bmj.v2i2.89](https://doi.org/10.58742/bmj.v2i2.89).
9. Takemura M, Yoshida K, Takii M, Sakurai K, Kanazawa A. Gastric malignant schwannoma presenting with upper gastrointestinal bleeding: a case report. *Journal of Medical Case Reports*. 2012;6:1-4. [doi:10.1186/1752-1947-6-37](https://doi.org/10.1186/1752-1947-6-37).
10. Kormann S, Semadeni GM, Weber M, Brand S, Borovicka J, Frei R. Combining Endoscopic Submucosa Dissection and Endoscopic Full-Thickness Resection for Resection of a Gastric Schwannoma Mimicking Gastrointestinal Stroma Tumor. *ACG Case Reports Journal*. 2024;11(7): e01440. [doi:10.14309/crj.0000000000001440](https://doi.org/10.14309/crj.0000000000001440).
11. Lin XM, Liu J, Xi CH, Wang J, Yang GD, Wang XF, Yuan C. Compression from a retroperitoneal schwannoma presenting as a subepithelial lesion of the gastric fundus. *Endoscopy*. 2024; 56(S 01):E236-7. [doi:10.1055/a-2271-4028](https://doi.org/10.1055/a-2271-4028).
12. Huang Y, Huang Y, Jin H, Pei X. Treatment of gastric paralysis after gastric schwannoma by electroacupuncture: A case report and literature review. *EXPLORE*. 2024 ;20(4): 592-6. [doi:10.1016/j.explore.2023.11.009](https://doi.org/10.1016/j.explore.2023.11.009).